



Yukon Axles



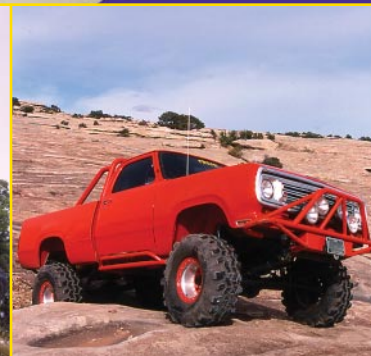
GM



Jeep



Ford



Chrysler

Quality Axles & Axle Components



Mission Statement

Our mission is to exceed expectations of high quality, competitive pricing, and value for our customers. Yukon Gear and Axle provides the highest quality differential parts available at the best possible prices using the latest manufacturing and metallurgical processes available. We will provide the widest selection of products available.

YUKON GEAR & AXLE





Contents

Technically Speaking: Manufacturing Axles. 2-7

Applications:

- Chrysler, Dana 8-9
- Ford Car, Ford Truck. 9-11
- GM Car 12
- GM Truck 13
- Jeep (OEM Replacements, Heavy-Duty) 14-15
- 4340 Front Axles 16
- OEM Replacement Front Axles 17-18
- Axle Bearing Kits, Axle U-Joints 19
- Measuring for Individual Axle Length 19





Technically Speaking



**Why we
want to tell
people about
Yukon axles...**

**Not only should
the customer get a
low price, but also
the highest quality
available.**

**These ARE
high quality
axles!**

We have searched the world to bring you the best axle shafts available for heavy-duty use in trucks, cars, racing, and off-road applications. Yukon axles are produced using state-of-the-art equipment and manufacturing methods by some of the best OEM manufacturers in the world. We have been to the factories. We know the people. We will stand behind the quality of Yukon axle shafts. On that you have our word.

Strength

The first factors to consider when building a high quality axle shaft are material strength and hardness. There are a lot of choices for axle shaft steel. Many of those choices will work OK in the average applications. Yukon axles are designed and built using the right steel for heavy-duty applications.

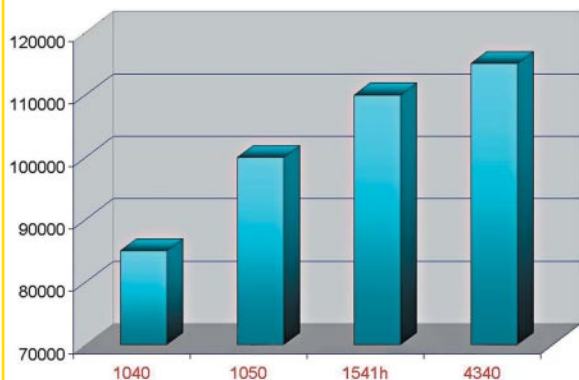
Steel Types

Steel choices for OEM axle manufacturers include 1040 steel or 1050 steel for OEM replacement axles. 1040 steel is not very desirable. However, 1050 steel works great for OEM replacement axle shafts in trucks and many passenger cars. The 1050 steel has considerably more carbon than 1040 steel, which makes it approximately 18 percent stronger and 16 percent harder than 1040 steel. The 1050 steel used in some of our OEM replacement axle shafts provides plenty of strength for heavy-duty use.



Alloy Steel Grades

Tensile Strength



There are several grades of steel available for axle shafts. Even different alloys can greatly increase strength. Using high quality alloy gives Yukon axles a lot more strength than our competitor's axles. High performance Yukon axles are made using high quality 1050, 1541h, and 4340 alloy steels.

For high performance applications, 1541h steel is an excellent choice. 1541h steel contains a lot more manganese than 1040 or 1050 steels, which adds strength, hardenability, and helps in deep heat-treating. Deeper heat-treating and greater strength are a few of the reasons 1541h is used for high performance and custom axle shafts. It is much stronger than 1050 steel without being a whole lot more costly. The durability of this alloy is very good as long as the heat-treat procedures are completed correctly. 1541h steel is approximately 20 to 25 percent stronger than 1040 steel used in OEM axle shafts.

In extreme high performance use where twisting torque is important but bending stresses are limited, 4140 or 4340 chromemoly alloy steels work well.

4140 chromemoly provides approximately 27 percent more strength than 1040 steel, while 4340 chromemoly provides approximately 39 percent more strength than 1040 steel. This translates into huge gains in twisting strength as long as bending will not be an issue. 4340 is approximately 10 percent stronger than 4140 due to the addition of more nickel, which increases toughness and strength.

Hardness

Hardness is one of the most important properties that effects the strength of a material. Hardness is related to a material's resistance to deformation or penetration. A well-made axle shaft with the right alloys and hardness is less likely to wear, bend, twist, break, or deteriorate as a result of the pressures and forces it must support. The hardness of good axle shafts is achieved by controlling several processes. Using the right alloys, tempering, normalizing, and proper heat-treating are all necessary in order to produce a strong axle shaft. Most automotive axle shafts

Effects of alloying elements on steel:

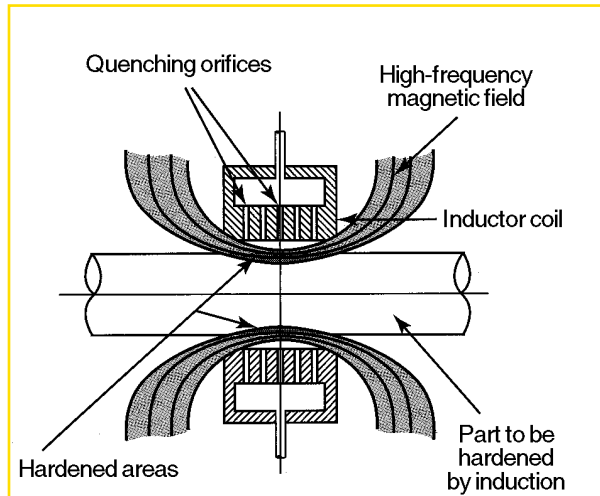
Carbon:	Hardness
Chromium:	Hardenability and corrosion resistance
Manganese:	Strength, hardenability, more response to heat treating
Nickel:	Toughness and strength
Silicone:	Deoxidation, hardenability
Molybdenum:	High temperature strength and hardenability
Phosphorus:	Strength



Technically Speaking

are case hardened. Case hardening leaves a hard surface layer (from approximately 0.100" to 0.400" deep) and leaves the core relatively soft, strong, and tough. Through hardening can increase strength, but also leads to problems if the shaft is used to support the weight of the vehicle. Through hardening produces a shaft that is usually too brittle to support the side loads the flange incurs while supporting the vehicle. Case hardening causes less distortion and cracking than through hardening, especially in large cross-sectional areas.

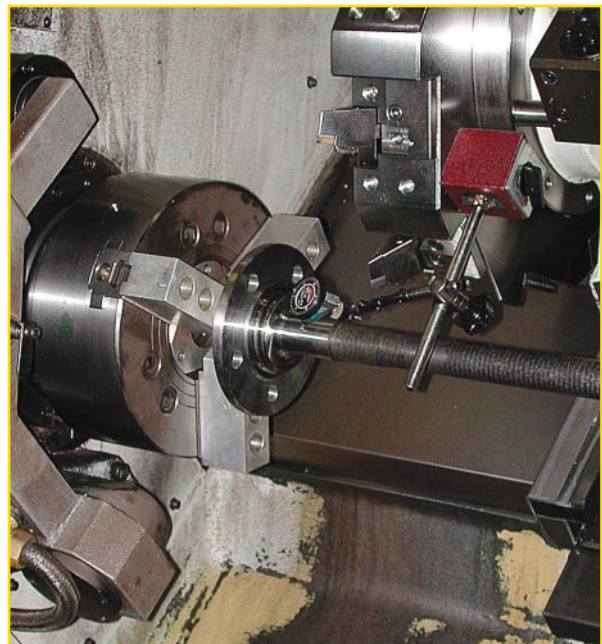
Yukon axles are made from the finest alloy and carefully heat-treated using modern computer-controlled hardening equipment. Deep heat-treating gives Yukon axles more strength and more resistance to abuse.



Yukon axles are made from the finest alloys and carefully heat-treated using modern computer-controlled hardening equipment. Deep heat-treating gives Yukon axles more strength and more resistance to abuse.



Here is an excellent example of a properly heat-treated axle shaft. This is what you can expect in a Yukon axle.



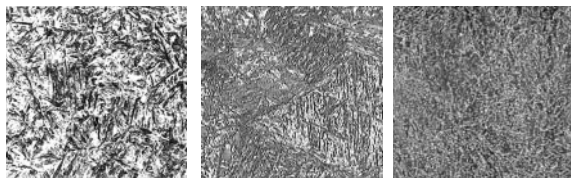
Yukon axles are made using computer-controlled equipment.



Quality

There are many processes involved in producing a quality Yukon axle shaft. A quick list would include: choosing the right steel, upset forging the flange end, normalization of the material, rough turning into the approximate shape of the shaft, final smooth turning, cutting or rolling the splines, drilling the stud holes, turning the c-clip groove, hardening the shaft, magnaflux inspection for cracks, finish grinding the bearing and seal surfaces, and finish machining the flange. We take great pride in doing each step right and ensuring that you get a high quality Yukon axle.

Steel Grain Structures



As you can see, steel can vary depending on quality and production methods. Yukon axles are heat-treated for consistent, tight grain structure. Tight grain structure and deep heat-treating provide greater strength and longer life.

Axle Splines

Axle splines can be cut or rolled into the shaft. Either method is plenty strong and each have their own advantages. Rolled splines can produce a better grain structure in the material for greater durability, while cutting the splines allows the shaft hardness to be consistently thick right up to the end of the splines. Both spline forming methods hold up well for axle

shafts. Both can be argued as being good methods. Yukon axle shafts are made with either method depending on the manufacturer's choice for accuracy, strength, and durability.

Yukon Axles are Never Coated

Beware of axles that are black coated! Even we have had second-rate axles passed off to us as top quality (we were assured they were better than what they actually were by someone, who it turns out, works for one of our competitors). Coatings can be used to hide things like friction welded shafts, poor heat-treating, rust, and irregularities in the metal.

Yukon axle shafts are never coated to hide flaws. All Yukon axles are produced from quality one-piece forgings using upset forge methods for strength and consistency. Our upset forging processes create a subsurface grain structure that closely matches the shape of the flange for increased strength and durability. We are proud of the quality of our axle shafts and you will see the quality of the steel, the quality machine work, and the quality that state-of-the-art computer-controlled heat-treating produces.

Putting all of these variables together into a first-rate finished product takes millions of dollars in equipment, high attention to detail, and lots of experience. We have traveled the world to find you the best and we are confident that our axle shafts will serve you well.



YUKON GEAR & AXLE

Chrysler Car

Part #	Hollander #	Model	Length	Splines	Bolt Pattern	Stud Hole	Brake Pilot	Brg Surface
YA C4506115	447-1900	8.25	30 7/8	27	6 - 4.50	0.645	2.830	1.620
YA C8.75-28.0		8.75	28	30	5 - 4.50	0.645	2.830	1.565
YA C8.75-30.0	447-984	8.75	30	30	5 - 4.50	0.645	2.830	1.565

Chrysler Truck

Part #	Hollander #	Model	Length	Splines	Bolt Pattern	Stud Hole	Brake Pilot	Brg Surface
YA C4348511	447-1552	7.25	30 3/8	25	5 - 4.50	0.645	2.830	1.620
YA C45066147	447-1901	7.25	30 3/8	25	6 - 4.50	0.645	2.830	1.620
YA C52098902	447-2235	8.25	29 7/8	29	5 - 4.50	0.595	2.830	1.620
YA C53008134	447-8131	8.25	29 7/8	27	5 - 4.50	0.595	2.830	1.620
YA C4348510	447-1551	8.25	30 13/16	27	5 - 4.50	0.645	2.830	1.620
YA C4506115	447-1900	8.25	30 13/16	27	6 - 4.50	0.645	2.830	1.620
YA C4137672	447-1438	8.25	31 13/16	27	5 - 5.50	0.595	2.830	1.620
YA C3496577	447-998	8.25	32 5/8	27	5 - 4.50	0.645	2.830	1.620
YA C4137670	447-1441	8.25	32 5/8	27	5 - 5.50	0.645	3.560	1.620
YA C4137838	447-1074	8.25	31 13/16	27	5 - 4.50	0.645	2.830	1.620
YA C52069512	447-2226R	8.25	30 1/4	29	6 - 4.50	0.645	2.830	1.620
YA C52069513	447-2226L	8.25	33 3/8	29	6 - 4.50	0.645	2.830	1.620
YA C4037726	447-1289	9.25	31 13/16	31	5 - 5.50 0.535	0.176 groove	3.560	1.620
YA C4137429	447-1398	9.25	31 5/8	31	5 - 5.50 0.645	0.208 groove	3.560	1.620
YA C3723824	447-1081	9.25	31 11/16	31	5 - 4.50	0.645	2.830	1.620
YA C4011257	447-1083	9.25	32 5/8	31	5 - 4.50	0.645	2.830	1.620
YA C52067614	447-2030	9.25	34 1/16	31	5 - 5.50	0.645	3.090	1.620
YA C52067708	447-1927	9.25	32 5/8	31	5 - 5.50	0.645	3.547	1.620

YUKON GEAR & AXLE - CHRYSLER, DANA



YUKON GEAR & AXLE

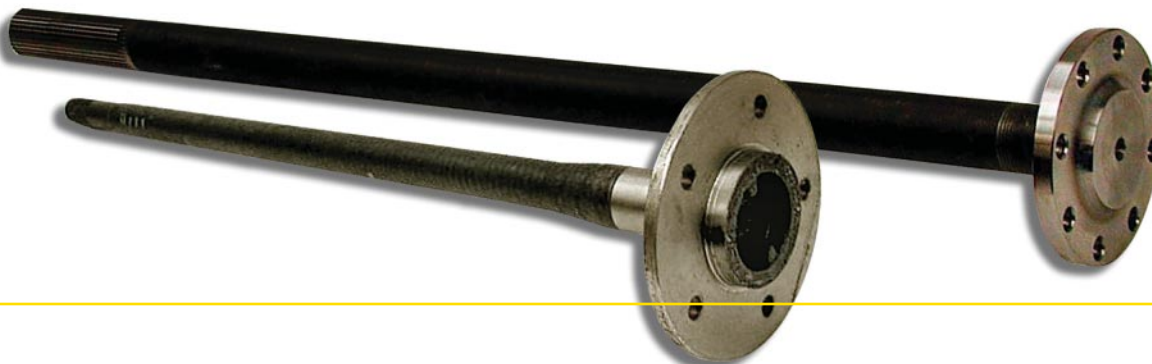


Dana

Part #	Hollander #	Model	Length	Type	Splines	Bolt Pattern
YA FF30-33.5		D60	31 to 33.5 Cut To Fit	Full-Float	30	8 - 3.96
YA FF30-36.5		D60	34 to 36.5 Cut To Fit	Full-Float	30	8 - 3.96
YA FF30-39.5		D60	37 to 39.5 Cut To Fit	Full-Float	30	8 - 3.96
YA FF35-33.5		D60,D70,D80	31 to 33.5 Cut To Fit	Full-Float	35	8 - 3.96
YA FF35-36.5		D60,D70,D80	34 to 36.5 Cut To Fit	Full-Float	35	8 - 3.96
YA FF35-39.5		D60,D70,D80	37 to 39.5 Cut To Fit	Full-Float	35	8 - 3.96
YA D36113-1	447-1167	D60,D70,D80	35	Full-Float	35	8 - 3.96
YA D43811-1	447-1923	D70	34.24	Full-Float	32	8 - 3.96
YA D45553-2	447-2036	D60,D70,D80	39	Full-Float	35	8 - 3.96
YA D45553-3	447-2035	D60,D70,D80	36.65	Full-Float	35	8 - 3.96
YA D75344-1X	447-2122	D60	31.86	Semi-Float	35	8 - 6.50
YA D75344-2X	447-2123	D60	34.13	Semi-Float	35	8 - 6.50
YA D70867-18X	447-1508	D60	34.14	Semi-Float	35	8 - 6.50
YA D43286-1	447-1452	D80	37.67	Full-Float	35	8 - 4.33
YA D43651-1	447-2011	D80	37.67	Full-Float	37	8 - 4.33
YA D46930-1	447-2246	D80	40	Full-Float	35	8 - 3.96
YA D46930-2	447-2247	D80	42.47	Full-Float	35	8 - 3.96
YA D47852-1	447-2456	D80	40	Full-Float	37	8 - 5.22

Ford Car

Part #	Hollander #	OEM #	Model	Length	Splines	Bolt Pattern	Stud Hole	Brake Pilot	Brg Surface
YA F750001	447-1231	D9BZ-4234-C	7.5 & 8.8	29 1/4	28	4 - 4.25	0.600	2.525	1.400
YA F750004	447-1338	E3TZ-4234-C	7.5 & 8.8	29 1/4	28	5 - 4.50	0.600	2.525	1.400
YA F750006	447-1446	E5SZ-4234-A	7.5 & 8.8	30	28	4 - 4.25	0.600	2.525	1.400
YA F750007	447-1442A	E5LY-4234-A	7.5 & 8.8	30 1/2	28	5 - 4.50	0.600	2.775	1.400
YA F750009	447-1227	D9AZ-4234-A	7.5 & 8.8	31	28	5 - 4.50	0.600	2.775	1.400
YA F750010	447-1731	FOAZ-4234-A	7.5 & 8.8	31 5/8	28	5 - 4.50	0.600	2.775	1.400
YA F880009	447-1576	E7SZ-4234-A	7.5 & 8.8	30	28	4 - 5.25	0.600	2.525	1.400
YA F880017	447-2006	F4ZZ-4234-B	7.5 & 8.8	30	28	5 - 4.50	0.600	2.775	1.400
YA F880018	447-1824	F2AZ-4234-B	7.5 & 8.8	31 5/8	28	5 - 4.50	0.600	2.775	1.400
YA F880021	447-2007	F4ZZ-4234-A	7.5 & 8.8	30	28	5 - 4.50	0.600	2.775	1.400
YA F880022	447-2307	F8AZ-4234-DA	7.5 & 8.8	32 7/16	28	5 - 4.50	0.600	2.775	1.400
YA FM4235B			8.8	29 1/4	31	4 - 4.25	0.600	2.525	1.400
YA FM4235D			8.8	30	31	5 - 4.50	0.600	2.775	1.400
YA FM4235E			8.8	30 3/4	31	5 - 4.50	0.600		1.400





YUKON GEAR & AXLE

Ford Truck

Part #	Hollander #	OEM#	Model	Length	Splines	Bolt Pattern	Stud Hole	Brake Pilot	Brg Surface
YA F750002	447-1337	E3TZ-4234-B	7.5 & 8.8	26 1/4	28	5 - 4.50	0.600	2.525	1.400
YA F750003	447-1321	E3TZ-4234-A	7.5 & 8.8	28	28	5 - 4.50	0.600	2.525	1.400
YA F750004	447-1338	E3TZ-4234-C	7.5 & 8.8	29 5/32	28	5 - 4.50	0.600	2.525	1.400
YA F750005	447-1339R	E4TZ-4234-A	7.5 & 8.8	27 11/16	28	5 - 4.50	0.600	2.525	1.400
YA F750008	447-1456L	E69Z-4234-A	7.5 & 8.8	32 1/4	28	5 - 4.50	0.600	2.525	1.400
YA F880019	447-2089	F37Z-4234-B	7.5 & 8.8	30 3/16	28	5 - 4.50	0.600	2.525	1.400
YA F880020	447-2088	F37Z-4234-A	7.5 & 8.8	27 5/16	28	5 - 4.50	0.600	2.525	1.400
YA F880001	447-1342	E3TZ-4234-F	8.8	32 1/4	31	5 - 4.50	0.600	2.870	1.620
YA F880002	447-1340R	E3TZ-4234-D	8.8	31 1/16	31	5 - 5.50	0.600	2.870	1.620
YA F880003	447-1341L	E3TZ-4234-E	8.8	33 1/16	31	5 - 5.50	0.600	2.870	1.620
YA F880004	447-1724R	F1TZ-4234-A	8.8	27 13/16	31	5 - 4.50	0.600	2.870	1.620
YA F880005	447-1725L	F1TZ-4234-B	8.8	30 11/16	31	5 - 4.50	0.600	2.870	1.620
YA F880006	447-1575L	E7UZ-4234-E	8.8	35 3/4	31	5 - 5.50	0.600	3.415	1.620
YA F880007	447-1573R	E7TZ-4234-A	8.8	31 1/16	31	5 - 5.50	0.600	3.415	1.620
YA F880008	447-1574L	E7TZ-4234-B	8.8	33 3/16	31	5 - 5.50	0.600	2.430	1.620
YA F880014	447-2120R	E5TZ-4234-A	8.8	27 13/16	31	5 - 4.50	0.600	2.870	1.620
YA F880015	447-2121L	E5TZ-4234-B	8.8	30 11/16	31	5 - 4.50	0.600	2.870	1.620
YA F880031	447-2304	F75Z-4234-KA	8.8	31 7/8	31	5 - 5.25	0.568	3.415	1.705
YA F880032	447-2305	F75Z-4234-KB	8.8	33 1/2	31	5 - 5.25	0.568	3.415	1.705
YA F880033	447-2192	F75Z-4234-NA	8.8	31 7/8	31	5 - 5.25	0.568	3.415	1.620
YA F880034	447-2193	F75Z-4234-NB	8.8	33 1/2	31	5 - 5.25	0.568	3.415	1.620
YA F880061	IFS STUB AXLE	F65Z-3220-AA	8.8						
YA F900001	447-1172	D6TZ-4234-A	9	32	31	5 - 5.50	0.600	2.870	1.565
YA F900001-35SP			9	32	35	5 - 5.50	0.600	2.870	1.565
YA F900002	66-75 Bronco RH w/11"X1.75" Brakes		9	29 1/2	31	5 - 5.50	0.600	2.870	1.565
YA F900003	66-75 Bronco LH w/11"X1.75" Brakes		9	27 1/8	31	5 - 5.50	0.600	2.870	1.565
YA F900004	74-75 Bronco RH w/10"X2.5" Brakes		9	29 3/4	31	5 - 5.50	0.600	2.870	1.565
YA F900005	74-75 Bronco LH w/10"X2.5" Brakes		9	27 3/8	31	5 - 5.50	0.600	2.870	1.565
YA F900006	76-77 Bronco RH w/11"X2.25" Brakes		9	29 11/16	31	5 - 5.50	0.600	2.870	1.565
YA F900007	76-77 Bronco LH w/11"X2.25" Brakes		9	27 3/16	31	5 - 5.50	0.600	2.870	1.565
YA F900011	447-1008R		9	29 1/2	28	5 - 5.50	0.600	2.870	1.375
YA F900012	447-1008L		9	27 1/8	28	5 - 5.50	0.600	2.870	1.375
YA F900013	447-1009R		9	29 5/16	28	5 - 5.50	0.600	2.870	1.535
YA F900014	447-1009L		9	26 15/16	28	5 - 5.50	0.600	2.870	1.535



YUKON GEAR & AXLE



Ford Truck (Continued)

Part #	Hollander #	OEM#	Model	Length	Splines	Bolt Pattern	Stud Hole	Brake Pilot	Brg Surface
YA F975001	447-2238	F75Z-4234-MA	9.75	31 13/16	34	5 - 135 mm	0.568	3.43	1.620
YA F975002	447-2239	F75Z-4234-MB	9.75	33 1/2	34	5 - 135 mm	0.568	3.43	1.620
YA F975003	447-2236	F75Z-4234-LA	9.75	31 13/16	34	5 - 135 mm	0.568	3.43	1.620
YA F975004	447-2237	F75Z-4234-LB	9.75	33 1/2	34	5 - 135 mm	0.568	3.43	1.620
YA F975005	447-2484	YL1Z-4234-CA	9.75	31 13/16	34	5 - 135 mm	0.610	3.43	1.705
YA F975006	447-2485	YL1Z-4234-CB	9.75	33 1/2	34	5 - 135 mm	0.610	3.43	1.705
YA F100001	447-1507	E5TZ-4234-B	10.25	30 1/2 Semi-Float	35	8 - 6.50	0.600	4.720	1.705
YA F100002	447-1506	E5TZ-4234-C	10.25	33 3/8 Semi-Float	35	8 - 6.50	0.600	4.695	1.705
YA F100010	447-1451	E5TZ-4234-E	10.25	35 1/2 Full-Float	35		0.600		

Part #	Model	Splines	Description
YA FBRONCO-1-28	9	28	Small Brg (KIT ONLY)
YA FBRONCO-2-28	9	28	66-75 w/1-3/4" Brakes (KIT ONLY w/TAPERED TIMKEN BRGS)
YA FBRONCO-2-31	9	31	66-75 w/1-3/4" Brakes (KIT ONLY w/TAPERED TIMKEN BRGS)
YA FBRONCO-2-35	9	35	66-75 w/1-3/4" Brakes (KIT ONLY w/TAPERED TIMKEN BRGS)
YA FBRONCO-3-28	9	28	76-77 w/2-1/4" Brakes (KIT ONLY w/TAPERED TIMKEN BRGS)
YA FBRONCO-3-31	9	31	76-77 w/2-1/4" Brakes (KIT ONLY w/TAPERED TIMKEN BRGS)
YA FBRONCO-3-35	9	35	76-77 w/2-1/4" Brakes (KIT ONLY w/TAPERED TIMKEN BRGS)
YA FBRONCO-4-28	9	28	74-75 w/2-1/2" Brakes (KIT ONLY w/TAPERED TIMKEN BRGS)
YA FBRONCO-4-31	9	31	74-75 w/2-1/2" Brakes (KIT ONLY w/TAPERED TIMKEN BRGS)
YA FBRONCO-4-35	9	35	74-75 w/2-1/2" Brakes (KIT ONLY w/TAPERED TIMKEN BRGS)





YUKON GEAR & AXLE

GM Car

Part #	Hollander #	Model	Length	Splines	Bolt Pattern	Stud Hole	Brake Pilot	Brg Surface
YA G12398538	447-788	12P	29 3/4	30	5 - 4.75	0.453	2.810	1.400
YA G12398538-3C		12P	29 3/4	33	5 - 4.75	0.453	2.810	1.400
YA G3969285	447-913	12P	30 1/8	30	5 - 4.75	0.453	2.810	1.400
YA G3969285-3C		12P	30 1/8	33	5 - 4.75	0.453	2.810	1.400
YA G3985720		12P	31 3/8	30	5 - 4.50	0.453	2.810	1.620
YA G12398538-33		12P	29 3/4	33	KIT ONLY COMPLETE w/ELIMINATOR BRGS			
YA G3969285-33		12P	30 1/8	33	KIT ONLY COMPLETE w/ELIMINATOR BRGS			
YA G3929165-L		55P	28 7/8	17	5 - 4.75	0.453	2.810	1.382
YA G3929165-R		55P	30 1/4	17	5 - 4.75	0.453	2.810	1.382
YA G551818	447-1208	7.5 & 7.625	28 7/16	26	5 - 4.75	0.484	2.780	1.400
YA G22506477	447-1137	7.5 & 7.625	30 1/2	26	5 - 4.75	0.453	2.780	1.400
YA G22515440	447-1301	7.5 & 7.625	30 5/16	26	5 - 4.75	0.484	2.780	1.400
YA G26019539	447-1870	7.5 & 7.625	30 7/16	26	5 - 5.00	0.484	3.055	1.400
YA G22515441	447-1302	7.5 & 7.625	30 7/16	26	5 - 4.75	0.484	2.780	1.400
YA G26063146	447-1961	7.625	32 1/8	28	5 - 4.75	0.484	2.780	1.400
YA G26031251	447-1777	7.625	30 3/8	28	5 - 4.75	0.484	2.780	1.400
YA G26034018	447-1776	7.625	30 3/8	28	5 - 4.75	0.484	2.780	1.400
YA G26059962	447-2343	7.625	32 1/8	28	5 - 4.75	0.484	2.780	1.400
YA G26059972	447-2342	7.625	31 15/16	28	5 - 4.75	0.484	2.780	1.400
YA G26027588	447-1960	7.625	32 1/8	28	5 - 4.75	0.484	2.780	1.400
YA G1255800	447-789	8.2	28 5/8	28	5 - 4.75	0.453	2.810	1.400
YA G26038684	447-2048	8.5	USE G26018080					
YA G1255803	447-787	8.2 & 8.5	29 1/2	28	5 - 4.75	0.453	2.810	1.400
YA G1255803-SH	447-787	8.2 & 8.5	29 1/2	28	5 - 4.75	0.453	2.780	1.400
YA G1255802	447-912	8.2 & 8.5	30 1/4	28	5 - 4.75	0.453	2.810	1.400
YA G1255802-SH	447-912	8.2 & 8.5	30 1/4	28	5 - 4.75	0.453	2.780	1.400
YA G1255801	447-1067	8.2 & 8.5	30 1/2	28	5 - 4.75	0.453	2.810	1.400
YA G1255801-SH	447-1067	8.2 & 8.5	30 1/2	28	5 - 4.75	0.453	2.780	1.400
YA G1255804		8.2 & 8.5	31 3/8	28	5 - 4.75	0.453	2.810	1.400
YA G1255804-SH		8.2 & 8.5	31 3/8	28	5 - 4.75	0.453	2.780	1.400
YA G8.2BOP-L		8.2BOP	29 7/8	28	5 - 4.75	0.453	2.780	1.382
YA G26043163		8.5	31 1/16	28	5 - 5.00	0.484	3.055	1.400
YA G25501599	447-1205	8.5	30 7/16	28	5 - 5.00	0.513	3.055	1.400
YA G3863726		8.2	30 3/8	28	5 - 4.75	0.453	2.810	1.620
YA G26018080	447-1858	8.5	30 3/8	30	5 - 5.00	0.484	3.055	1.400
YA G26014036	447-1668	8.5	30 7/16	28	5 - 4.75	0.431	2.780	1.400
YA G26043164	447-2170	8.5	31 1/16	30	5 - 5.00	0.484	3.055	1.400



YUKON GEAR & AXLE



GM Truck

Part #	Hollander #	Model	Length	Splines	Bolt Pattern	Stud Hole	Brake Pilot	Brg Surface
YA G3893604		12T	30 3/4	17	6 - 5.50	0.453	3.055	1.620
YA G3914060	447-781	12T	31 3/8	30	5 - 4.75	0.453	3.055	1.400
YA G3893605	447-780	12T	30 3/4	30	6 - 5.50	0.453	3.055	1.620
YA G14071751	447-1062	12T	31 7/16	30	5 - 5.00	0.513	3.055	1.620
YA G14071750	447-1063	12T	31 7/16	30	6 - 5.50	0.453	3.560	1.620
YA G3977384	447-1774	14T - F/F	37 9/16	30	8 - 3.50	0.513		
YA G3977383	447-1775	14T - F/F	31 11/16	30	8 - 3.50	0.513		
YA G26011161	447-1769	14T - F/F	37 1/2	30	8 - 3.50	0.513		
YA G26011162	447-1771	14T - F/F	42	30	8 - 3.50	0.513		
YA G26051134		14T-F/F	34	30	8 - 3.50	0.513		
YA G26051135		14T-F/F	39 7/8	30	8 - 3.50	0.513		
YA G26009534	447-1599	7.5 & 7.625	26 7/8	28	5 - 4.75	0.484	2.780	1.400
YA G26039423		7.625	26 13/16	28	5 - 4.75	0.484	2.780	1.400
YA G14074822	447-1409R	7.5 & 7.625	30 1/2	26	5 - 5.00	0.513	3.090	1.400
YA G14074821	447-1409L	7.5 & 7.625	34 7/8	26	5 - 5.00	0.513	3.090	1.400
YA G14030355	447-1310	7.5 & 7.625	26 7/8	26	5 - 4.75	0.484	2.780	1.400
YA G14035368	447-1329	7.5 & 7.625	29 1/16	26	5 - 4.75	0.484	2.780	1.400
YA G26004859		7.5 & 7.625	31 1/16	26	5 - 4.75	0.484	2.780	1.400
YA IRODEO		7.625	28 1/4	28	6 - 5.50	0.484	3.055	1.400
YA G26013882	447-1651	7.625	29	28	5 - 4.75	0.484	2.780	1.400
YA G26015260	447-1861	7.625	29 1/8	28	5 - 4.75	0.484	2.780	1.400
YA G26011055	447-1764	7.625	30 1/2	28	5 - 5.00	0.513	3.090	1.400
YA G26015258	447-2173	7.625	30 1/2	28	5 - 5.00	0.513	3.090	1.400
YA G26011054	447-2173	7.625	34 7/8	28	5 - 5.00	0.513	3.090	1.400
YA G26015257	447-1764	7.625	34 7/8	28	5 - 5.00	0.513	3.090	1.400
YA G25588366	Intermediate Axle	8.25IFS		28				
YA G26006822	RH Stub Axle	8.25IFS	15 5/8	28				
YA G26006824	LH Stub Axle	8.25IFS	5	28				
YA G26058547	447-2367	8.5	30 15/16	30	5 - 4.75	0.484	2.780	1.620
YA G14039547	447-1300	8.5	31 1/2	28	6 - 5.50	0.453	3.565	1.620
YA G15522066	447-1606	8.5	32	28	5 - 5.00	0.453	3.090	1.620
YA G26010414	447-1652	8.5	31 1/2	30	6 - 5.50	0.453	3.525	1.620
YA G26010415	447-1669	8.5	31 1/2	30	5 - 5.00	0.513	3.090	1.620
YA G14035542	447-1204	8.5	31 5/16	28	5 - 5.00	0.513	3.090	1.620
YA G26010417	447-1670	8.5	32	30	5 - 5.00	0.600	3.090	1.620
YA G26010416	447-1671	8.5	33	30	6 - 5.50	0.600	3.055	1.620
YA G15521892	447-1608	8.5	33 1/4	28	6 - 5.50	0.600	3.055	1.620
YA G14042690	447-1085	8.5	33 7/16	28	5 - 5.00	0.513	3.715	1.620
YA G26013313	447-1672	8.5 & 12T	33 3/8	30	5 - 5.00	0.513	3.090	1.620
YA G12471369	447-2457	8.6	33 3/4	30	6 - 5.50	0.600	3.090	1.620
YA G26009627	LH Stub Axle	9.25IFS		33				
YA G26031836	RH Stub Axle	9.25IFS		33				
YA G15522070	447-1615	9.5	32	33	8 - 6.50	0.600	4.620	1.700
YA G14035355		9.5	35 15/16	33	8 - 6.50	0.600	4.620	1.700
YA G14035395	447-1276	9.5	32 3/4	33	8 - 6.50	0.600	4.620	1.700



YUKON GEAR & AXLE

Jeep (OEM Replacements)

Part #	Hollander #	Model	Length	Splines	Bolt Pattern	Stud Hole	Brake Pilot	Brg Surface
YA D73499-1X	447-1567R	D44	29	30	5 - 4.50	0.600	2.828	1.560
YA D75786-2X	447-2416L	D44	29 1/4	30	5 - 4.50	0.600	2.828	1.560
YA D75786-1X	447-2416R	D44	29 3/4	30	5 - 4.50	0.600	2.828	1.560
YA D74871-1X	447-2232R	D44HD	29 3/8	30	5 - 4.50	0.600	2.828	1.400
YA D74871-2X	447-2232L	D44HD	30 3/8	30	5 - 4.50	0.600	2.828	1.400
YA D76454-1X	447-2463	D44-SUPER	29 1/4	30	5 - 5.0	0.600	2.828	1.380
YA D76454-2X	447-2464	D44-SUPER	32 1/4	30	5 - 5.0	0.600	2.828	1.380
YA D76454-3X	447-2465	D44-SUPER	30 1/4	30	5 - 5.0	0.600	2.828	1.380
YA D76454-4X	447-2466	D44-SUPER	31 3/4	30	5 - 5.0	0.600	2.828	1.380
YA M20-8127070		M20	26 1/4	29	SEPARATE HUB			1.377
YA M20-8127071		M20	29 3/8	29	SEPARATE HUB			1.377
YA M20-8133730		M20	HUB	HUB	5 - 5.50	0.600	4.160	
YA M20-8133885		M20	28 5/8	29	SEPARATE HUB			1.377
YA M20-8133886		M20	31 5/8	29	SEPARATE HUB			1.377
YA D72912-1X	447-1799R	M35	29	27	5 - 4.50	0.600	2.840	1.360
YA D73879-1X	447-1797BR	M35	29 1/4	27	5 - 4.50	0.600	2.828	1.400
YA D74356-1X	447-2204R	M35	29 1/4	27	5 - 4.50	0.600	2.828	1.400
YA D74789-1X	447-2081R	M35	29 1/4	27	5 - 4.50	0.600	2.828	1.400
YA D72912-2X	447-1799L	M35	30 1/2	27	5 - 4.50	0.600	2.840	1.360
YA D73879-2X	447-1797BR	M35	30 11/16	27	5 - 4.50	0.600	2.828	1.400
YA D74356-2X	447-2204L	M35	30 11/16	27	5 - 4.50	0.600	2.828	1.400
YA D74789-2X	447-2081L	M35	30 11/16	27	5 - 4.50	0.600	2.828	1.400
YA D73624-1X	447-1797R	M35	USE YA D73879-1X					
YA D73624-2X	447-1797L	M35	USE YA D73879-2X					
YA D76467-3X	447-2461	M35	30 15/16	27	5 - 5.0	0.600	2.828	1.380
YA D76454-4X	447-2462	M35	32 7/16	27	5 - 5.0	0.600	2.828	1.380



YUKON GEAR & AXLE



Jeep (Heavy Duty)

Part #	Hollander #	Model	Length	Splines	Bolt Pattern	Stud Hole	Brake Pilot	Brg Surface
YCJL	LATE CJ	M20		29	KIT COMPLETE w/TAPERED TIMKEN ROLLER BRGS			
YCJL-PL	LATE CJ w/P-L	M20		29	KIT COMPLETE w/TAPERED TIMKEN ROLLER BRGS			
YCJQ	QUADRATRACK	M20		29	KIT OCOMPLETE w/TAPERED TIMKEN ROLLER BRGS			
YCJS	EARLY CJ	M20		29	KIT COMPLETE w/TAPERED TIMKEN ROLLER BRGS			
YCJS-PL	EARLY CJ w/P-L	M20		29	KIT COMPLETE w/TAPERED TIMKEN ROLLER BRGS			
YA D72912-1-30		M35	29	30	5 - 4.50	0.600	2.840	1.360
YA D72912-1-HD		M35	29	27	COLD EXTRUDED FOR SUPER STRENGTH, BOLT IN			
YA D72912-2-30		M35	30 1/2	30	5 - 4.50	0.600	2.840	1.360
YA D72912-2-HD		M35	30 1/2	27	COLD EXTRUDED FOR SUPER STRENGTH, BOLT IN			
YA D74356-1-HD	447-2204R	M35	29 1/4	27	COLD EXTRUDED FOR SUPER STRENGTH, C-CLIP			
YA D74356-2-HD	447-2204L	M35	30 11/16	27	COLD EXTRUDED FOR SUPER STRENGTH, C-CLIP			
YA M35-30-L		M35	30 11/16	30	5 - 4.50	0.600	2.828	1.400
YA M35-30-R		M35	29 1/4	30	5 - 4.50	0.600	2.828	1.400
YA M35W-1-30		M35	BOLT IN	30	KIT COMPLETE w/TAPERED TIMKEN BRGS AND LOCKER			
YA M35W-2-30		M35	C-CLIP	30	KIT COMPLETE w/TAPERED TIMKEN BRGS AND LOCKER			





YUKON GEAR & AXLE

YUKON GEAR & AXLE - 4340 FRONT AXLES

4340 Front Axles

Part #	Model	Length	Type	Splines	Description	U-Joint
YA TNOBIRF-A	Toyota 8	N/A	Kit	30	KIT ONLY COMPLETE w/SPINDLES & U-JOINTS	297
YA W37774	D30	8.31	Outer	27	WRANGLER 95 & UP OUTER STUB AXLE	297
YA W38098	D30	8.31	Outer	27	WRANGLER 87-94 OUTER STUB AXLE	260
YA W38103	D30	N/A	Spindle		'79-'86 JEEP CJ FRONT SPINDLES FOR HD AXLES, W/DISC BRAKES	
YA W38105	D44	N/A	Spindle		'74-'82 SCOUT FRONT SPINDLES FOR HD AXLES, W/DISC BRAKES	
YA W38109	D30	N/A	Kit	30	WRANGLER/CHEROKEE LOCKING HUB CONVERSION KITS	297
YA W38248	D30 & D44	8.72	Outer	30	CJ & SCOUT OUTER FRONT STUB AXLE	297
YA W38789	D30	27.01	Inner	27	CJ JEEP 72-81 INNER LH AXLE	297
YA W38790	D44	32.91	Inner	30	SCOUT 71-80 INNER LH AXLE	297
YA W38803	D30	14.14	Inner	27	CJ JEEP 72-81 INNER RH AXLE	297
YA W38804	D30	28.69	Inner	27	CJ JEEP 82-86 INNER LH AXLE	297
YA W38805	D30	15.82	Inner	27	CJ JEEP 82-86 INNER RH AXLE	297
YA W38806	D30	18.44	Inner	27	BRONCO 67-71 INNER LH AXLE	297
YA W38807	D30	28.06	Inner	27	BRONCO 67-71 INNER RH AXLE	297
YA W38808	D44	14.78	Inner	30	SCOUT & WAGONEER INNER RH AXLE	297
YA W38809	D44	18.31	Inner	30	GM 69-80, BRONCO 71-77 INNER LH AXLE SHAFT	297
YA W38810	D44	27.94	Inner	30	BRONCO 71-77 INNER RH AXLE	297
YA W38815	D44 & 8.5	9.94	Outer	19	GM TRUCK & BLAZER, WAGONEER DISK OUTER FRONT	297
YA W38816	D44	9.72	Outer	19	BRONCO, F150, WAGONEER DRUM OUTER FRONT	297
YA W38821	D30	16.63	Inner	27	XJ 84-90, TJ 97 & UP, WRANGLER 87 & UP LH INNER AXLE	297
YA W38875	D30	32.25	Inner	27	XJ 84-90, TJ 97 & UP, WRANGLER 87 & UP RH INNER AXLE	297
YA W39105	D30 & D44	8.72	Outer	27	CJ & SCOUT OUTER FRONT STUB AXLE	297
YA W39143	D44	18.91	Inner	30	BRONCO & F150 INNER LH AXLE	297
YA W39144	D44	33.91	Inner	30	BRONCO & F150 INNER RH AXLE	297
YA W39147	D30	N/A	Plate		D30 DISCONNECT BLOCK OFF PLATE	297
YA W39147-KIT	D30	N/A	Kit		D30 DISCONNECT BLOCK OFF PLATE & SEAL KIT	297
YA W39252	8.5 GM	19.15	Inner	28	GM TRUCK & BLAZER 79-87 INNER RH AXLE	297
YA W39253	8.5 GM	35.46	Inner	28	GM TRUCK & BLAZER 79-87 INNER LH AXLE	297
YA W39339	D44	33.19	Inner	30	WAGONEER 74-79 INNER LH AXLE	297
YA W39459	D44	15.80	Inner	30	WAGONEER 80-84 INNER RH AXLE	297
YA W39461	D44	32.12	Inner	30	WAGONEER 80-84 INNER LH AXLE	297
YA W39529	D44	36.13	Inner	30	GM TRUCK & BLAZER 69-80 INNER RH AXLE	297
YA W46100	D60 & D70	12.00	Outer	35	GM OUTER STUB AXLE SHAFT	297
YA W46101	D60 & D70	11.40	Outer	35	FORD 77 & UP OUTER AXLE STUB SHAFT	297

4340 Front Axles (Unfinished)

Part #	Model	Length	Description
YA W51553-1541S	D44 & D30	22.00	BLANK 297X FRNT INNER AXLE (NOT SPLINED) 1541H ALLOY
YA W51554-1541L	D44 & D30	36.25	BLANK 297X FRNT INNER AXLE (NOT SPLINED) 1541H ALLOY
YA W61553-4340S	D44 & D30	22.00	BLANK 297X FRNT INNER AXLE (NOT SPLINED) 4340 ALLOY
YA W61554-4340L	D44 & D30	36.25	BLANK 297X FRNT INNER AXLE (NOT SPLINED) 4340 ALLOY
YA W71555-1541S	D60	22.00	BLANK 332X FRNT INNER AXLE (NOT SPLINED) 1541H ALLOY
YA W71556-1541L	D60	38.00	BLANK 332X FRNT INNER AXLE (NOT SPLINED) 1541H ALLOY
YA W81555-4340S	D60	22.00	BLANK 332X FRNT INNER AXLE (NOT SPLINED) 4340 ALLOY
YA W81556-4340L	D60	38.00	BLANK 332X FRNT INNER AXLE (NOT SPLINED) 4340 ALLOY



OEM Replacement Front Axles

Part #	Model	Length	Type	Splines	U-Joint
DAN29903-1X	8.5 GM	19.10	Inner	28	297
DAN660276-1	8.5 GM	35.50	Inner	28	297
DAN40394	D28	7.66	Outer	23	456
DAN660548-2	D28	13.76	Inner	23	456
DAN74413-1X	D28	14.22	Inner	23	456
DAN40611	D30	6.11	Outer	27	260
DAN43205	D30	6.11	Outer	27	297
DAN36617	D30	8.72	Outer	27	260
DAN36859	D30 & D44	8.72	Outer	27	297
DAN73898-1X	D30	16.57	Inner	27	297
DAN75588-1X	D30	21.91	Assembly	15	297
DAN73918-1X	D30	22.68	Assembly	27	CV
DAN73818-2X	D30	38.51	Assembly	27	CV
DAN75814-1X	D30	22.68	Assembly	27	297
DAN75815-1X	D30	22.68	Assembly	27	297
DAN75814-2X	D30	38.52	Assembly	27	297
DAN75815-2X	D30	38.52	Assembly	27	297
DAN42569	M35	7.94	Outer	27	297
DAN3-82-1261X	D36 & D44		Outer	27	799
DAN36990	D44	6.63	Outer	35	297
DAN74917X	D44	6.77	Outer	33	297
DAN42350	D44	8.52	Outer	19	297
DAN660118-1	D44	9.53	Outer	19	297
DAN620200	D44	9.72	Outer	19	297
DAN39905	D44	9.75	Outer	19	297
DAN39906	D44	9.81	Outer	19	297
DAN621063	D44	9.92	Outer	19	297
DAN2-82-1221	D44	9.94	Outer	19	260
DAN41677	D44 & 8.5 GM	9.94	Outer	19	297
DAN37951	D44	10.66	Outer	19	297
DAN27902-19X	D44	14.61	Inner	30	297
DAN72041-1X	D44	15.14	Inner	30	297
DAN27902-25X	D44	16.10	Inner	30	297
DAN27902-21X	D44	16.50	Inner	30	297
DAN27902-5X	D44	17.10	Inner	30	297
DAN27902-11X	D44	18.31	Inner	30	297
DAN72706-4X	D44	18.32	Inner	15	297
DAN73579-2X	D44	18.32	Inner	15	297
DAN27902-1X	D44	18.60	Inner	30	297
DAN27902-31X	D44	18.62	Inner	30	297
DAN27902-4X	D44	18.91	Inner	30	297
DAN75265X	D44	18.94	Inner	30	297
DAN73579-1X	D44	19.10	Inner	15	297
DAN72112-1X	D44	24.77	Inner	31	297
DAN71394-1X	D44	25.60	Assembly	30	297



YUKON GEAR & AXLE

YUKON GEAR & AXLE - OEM REPLACEMENT FRONT AXLES

OEM Replacement Front Axles (Continued)

Part #	Model	Length	Type	Splines	U-Joint	
DAN74759-1X	D44	26.39	Assembly	15	297	
DAN76812-1X	D44	26.39	Assembly	15	297	
DAN71396-1X	D44	26.90	Assembly	30	297	
DAN76813-1X	D44	27.00	Assembly	30	297	
DAN660124-4	D44	28.40	Assembly	30	297	
DAN660124-2	D44	28.60	Assembly	30	297	
DAN29833-1X	D44	28.70	Assembly	30	297	
DAN73578-1X	D44	29.10	Assembly	15	297	
DAN72045-1X	D44	33.50	Assembly	31	297	
DAN27648-1X	D44	33.90	Inner	30	260	
DAN27902-3X	D44	33.90	Inner	30	297	
DAN72044-1X	D44	34.70	Assembly	31	297	
DAN27902-35X	D44	34.75	Inner	30	297	
DAN27902-22X	D44	35.25	Inner	30	297	
DAN27902-2X	D44	36.25	Inner	30	297	
DAN27902-8X	D44	36.50	Inner	30	297	
DAN27902-12X	D44	36.75	Inner	30	297	
DAN27902-18X	D44	37.10	Inner	30	297	
DAN660124-1	D44	43.60	Assembly	30	297	
DAN660124-3	D44	44.50	Assembly	30	297	
DAN29833-2X	D44	46.40	Assembly	30	297	
DAN46901	D60 w/o abs	7.05	Outer	33	332	
DAN75690X	D60 w/abs	7.05	Outer	33	332	
DAN48903	D60	11.40	Outer	30	332	
DAN620085	D60	11.40	Outer	30	332	
DAN3-82-871	D60	12.00	Outer	35	332	
DAN40955	D60	12.00	Outer	30	332	
DAN660182-1	D60	15.96	Inner	35	332	
DAN76660-1X	D60	16.17	Inner	35	332	
DAN660182-5	D60	17.67	Inner	35	332	
DAN74752X	D60	18.31	Inner	15	332	
DAN75594X	D60	18.59	Inner	30	332	
DAN660182-11	D60	18.70	Inner	35	332	
DAN45531	D60	20.56	Inner	30	Fit between side gear and disconnect	
DAN76812-1X	D44	26.39	Assembly	15	297	
DAN660182-10	D60	34.56	Inner	35	332	
DAN660182-6	D60	35.10	Inner	35	332	
DAN660182-36	D60	36.68	Inner	35	332	
DAN76660-2X	D60	36.97	Inner	35	332	
Part #	Model	Description				
YA D30-297-23.0	D30	23" OVERALL, 14.25 INNER AXLE				
YA D30-297-24.7	D30	24.75" OVERALL, 16" INNER 297X AXLE (82-86)				
YA D30-297-36.0	D30	36" OVERALL, 27" INNER 297X AXLE (76-83 CJ5, 76-81 CJ7) ASSEMBLY, HD				
YA D30-297-37.5	D30	37.5" OVERALL, 28.75" INNER 297X AXLE (82-86 CJ) ASSEMBLY, HD				
YA D44-297-18.3	D44	18.25" INNER 297X AXLE (71-77 BRONCO FRONT) FORD, HD				
YA D44-297-28.0	D44	28" INNER 297X AXLE (71-77 BRONCO FRONT) FORD, HD				
YA D44-297-28.2	D44	28.25" OVERALL, 18.25" INNER 297X AXLE (71-77)				
YA D44-297-37.8	D44	37.8" OVERALL, 28" INNER 297X AXLE (71-77 BRONCO) ASSEMBLY, FORD				



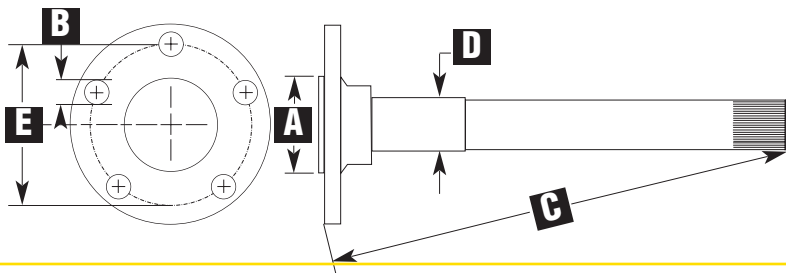
Axle Bearing Kits

Part #	Description
AK F10.25	10.25" FORD F/F AXLE BEARING & SEAL KIT (TIMKEN BRAND)
AK F10.5-A	10.5" FORD F/F AXLE BEARING & SEAL KIT (TIMKEN BRAND)
AK GM14T	14T F/F AXLE BEARING & SEAL KIT (TIMKEN BRAND)
AK 1559	R1559TV & 6408 AXLE BEARING & SEAL KIT, 2.530" OD (TORRINGTON BRAND)
AK 1561FD	R1561TV AXLE BEARING & SEAL KIT, FORD & DODGE, 2.985" OD (TORRINGTON BRAND)
AK 1561GM	R1561TV AXLE BEARING & SEAL KIT, GM 9.5", S/F, 2.985" OD (TORRINGTON BRAND)
AK 1563	R1563TAV & 5707 AXLE BEARING & SEAL KIT, 2.250" OD (TORRINGTON BRAND)
AK C7.25IFS	7.25" IFS CHRYSLER LH & RH PILOT, & INTERMEDIATE AXLE BEARINGS & SEAL KIT
AK D44-SUPER	SUPER D44 & SUPER M35 AXLE BRG KIT, BOLT-IN
AK GM9.25IFS	9.25" IFS GM L,R, & INTERMEDIATE AXLE BEARING & SEAL KIT
AK GMAV	ASTRO & SAFARI VAN AXLE BEARING & SEAL KIT, 2.445" OD (TORRINGTON BRAND)
AK C10	C10 AERO TRUCK AXLE BEARING & SEAL KIT, 2.800" OD (TORRINGTON BRAND)
AK M20	M20 2PC. TAPERED AXLE BEARING, SEALS, & SHIM KIT (TIMKEN BRAND)
AK M20-1PIECE	M20 1PC. TIMKEN TYPE AXLE BEARING, RETAINER, & SEAL KIT
AK M35-SUPER	SUPER M35 & SUPER D44 AXLE BRG & SEAL KIT, BOLT-IN
AK SET10	SET10 AXLE BEARING & SEAL KIT, SOME FLANGED D44 & M20 (TIMKEN BRAND)
AK SET9	SET9 AXLE BEARING & SEAL KIT, FOR M35 & SOME 8.2BOP BOLT-IN AXLES (TIMKEN BRAND)
AK TOY-FRONT-A	TOYOTA F/F & FRONT WHEEL BEARING & SEAL KIT (TIMKEN BRAND)
AK TOY	7.5", 8", V6 TACOMA, T100, & TUNDRA REAR AXLE BEARING & SEAL KIT TOYOTA (INCLUDE INNER & OUTER SEALS)

Axle U-Joints

Part #	Description
DAN5-74X	USE DAN5-260X OR DAN5-260-1X
DAN5-86X	U-JOINT FOR CLOSED KNUCKLE D44 & D60 FRONT AXLE
DAN5-178X	U-JOINT FOR D50 FRONT AXLE w/ZERK (1350)
DAN5-260X	U-JOINT FOR D30 FRONT AXLE w/o ZERK (SOME D44)
DAN5-260-1X	U-JOINT FOR D30 FRONT AXLE w/ZERK (SOME D44)
DAN5-297X	DISCONTINUED; USE DAN5-760X
DAN5-297-1X	U-JOINT FOR D44 & 8.5 GM FRONT AXLE w/ZERK
DAN5-332X	DISCONTINUED; USE DAN5-806X
DAN5-456X	U-JOINT FOR D28IFS FRONT AXLE
DAN5-732X	DISCONTINUED; USE DAN5-806X
DAN5-733X	U-JOINT FOR D60 FRONT AXLE (1480) (FORGED CROSS w/ZERK)
DAN5-760X	U-JOINT FOR D44 & 8.5 GM FRONT AXLE (FORGED CROSS w/o ZERK)
DAN5-799X	U-JOINT FOR D50 FRONT AXLE (1350) (SNAP-TITE DESIGN)-799X
DAN5-806X	FRGED CROSS, w/o ZERK 5-332X FRONT AXLE U/JOINT, D60, (1480)

Measuring for Individual Axle Length



- "A" brake pilot.
- "B" stud hole diameter.
- "C" length.
- "D" journal diameter
- "E" bolt pattern.



YUKON AXLE & QUALITY COMPONENTS

DISTRIBUTED BY

636 West Diversey Parkway #180 • Chicago, IL, 60614-1511

©2003 Yukon Gear & Axle